

# Liberty group of companies - summary

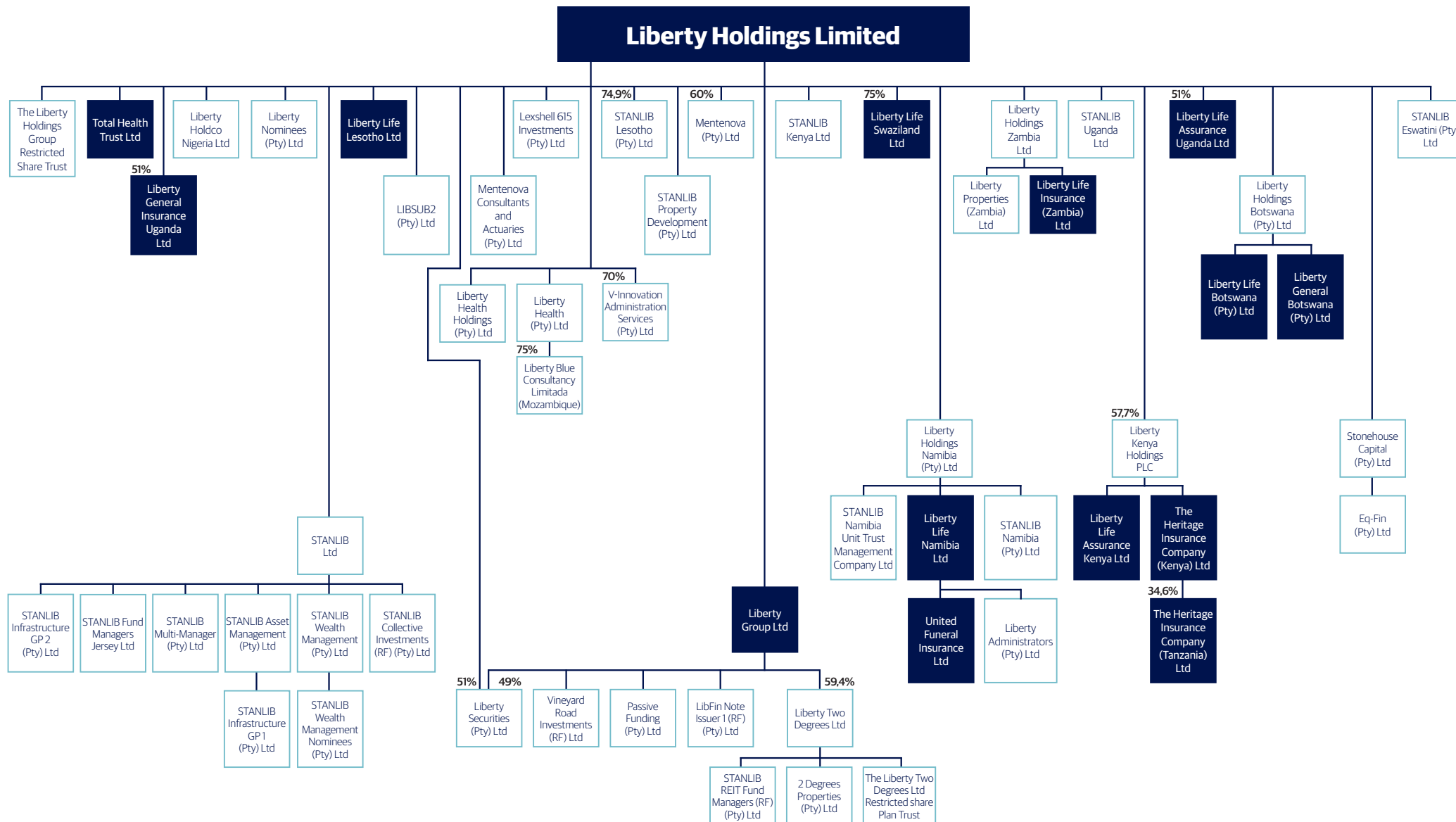
as at 31 December 2020

Includes subsidiaries which are directly wholly owned and directly partially owned, and indirectly wholly owned and indirectly partially owned through directly owned subsidiaries.

## Key

■ Insurance company

100% holding where no percentage shown



For a complete list of the group companies refer to Appendices B and D of the Liberty Group Limited and Liberty Holdings Limited annual financial statements, respectively.